

Table 13a. *Rosa* 'Meiradena' Icecap™ average monthly quality ratings (scale of 1-5) on 3 ET<sub>o</sub>-based irrigation treatments in 2017. Different superscripts denote significant differences within the month at  $p \leq 0.05$  using ANOVA and Tukey's HSD. Red superscripts denote a significant difference at  $p \leq 0.01$ .

	May	June	July	Aug	Sept	Oct	AVG
<b>Overall Appearance</b>							
80%	4.9	4.4	4.9 <sup>a</sup>	4.1	4.0	4.0	4.4
50%	5.0	4.1	5.0 <sup>a</sup>	4.3	3.1	3.6	4.2
20%	4.8	4.1	4.4 <sup>b</sup>	4.5	3.3	3.6	4.1
<b>Foliage</b>							
80%	3.8	4.9	4.6	4.0	3.8	3.6	4.1
50%	4.0	4.4	4.3	4.0	3.1	3.3	3.8
20%	4.0	4.6	4.4	4.4	3.8	3.4	4.1
<b>Flowering</b>							
80%	4.9	2.1	3.4	3.5	2.6	3.5	3.3
50%	5.0	2.1	3.6	3.6	2.0	3.1	3.3
20%	4.9	2.4	2.8	3.8	1.8	3.3	3.1
<b>Pest Tolerance</b>							
80%	3.8	4.9	4.6	4.1	4.1	3.9	4.2
50%	4.1	4.4	4.3	4.1	4.1	3.8	4.1
20%	4.1	4.6	4.4	4.6	4.3	3.9	4.3
<b>Disease Resistance</b>							
80%	5.0	5.0	5.0	5.0	4.9	5.0	5.0
50%	5.0	5.0	5.0	4.9	5.0	5.0	5.0
20%	5.0	5.0	5.0	5.0	4.8	5.0	5.0
<b>Vigor</b>							
80%	5.0	5.0	5.0	4.9	4.8	4.8	4.9
50%	5.0	5.0	5.0	4.9	4.0	4.4	4.7
20%	4.9	5.0	4.9	4.5	4.0	4.5	4.6

Table 13b. Open House participant ratings for *Rosa* 'Meiradena' Icecap™ on 3 ET<sub>o</sub>-based irrigation treatments in May, July, and September 2017.

	ET <sub>o</sub> %	May			July			September		
		80	50	20	80	50	20	80	50	20
Overall Appearance	Max	5	5	5	5	5	5	4	5	5
	Mean	3.9	4.0	3.9	3.5	4.0	3.4	2.6	4.1	3.3
	<b>Median</b>	<b>4</b>	<b>4</b>	<b>4</b>	<b>4</b>	<b>4</b>	<b>4</b>	<b>3</b>	<b>4</b>	<b>3</b>
	Min	2	2	3	2	3	2	1	2	2
Foliage Quality	Max	5	5	5	5	5	5	5	5	5
	Mean	4.0	4.1	3.9	3.7	4.2	3.9	2.7	4.2	3.7
	<b>Median</b>	<b>4</b>	<b>4</b>	<b>4</b>	<b>4</b>	<b>4</b>	<b>4</b>	<b>3</b>	<b>4</b>	<b>4</b>
	Min	3	3	2	3	3	3	1	2	2
Floral Display	Max	5	5	5	5	5	5	4	5	5
	Mean	3.1	3.0	3.1	2.8	3.5	2.8	1.5	4.0	2.3
	<b>Median</b>	<b>3</b>	<b>3</b>	<b>3</b>	<b>3</b>	<b>4</b>	<b>3</b>	<b>1</b>	<b>4</b>	<b>2</b>
	Min	0	0	0	1	2	1	0	2	0

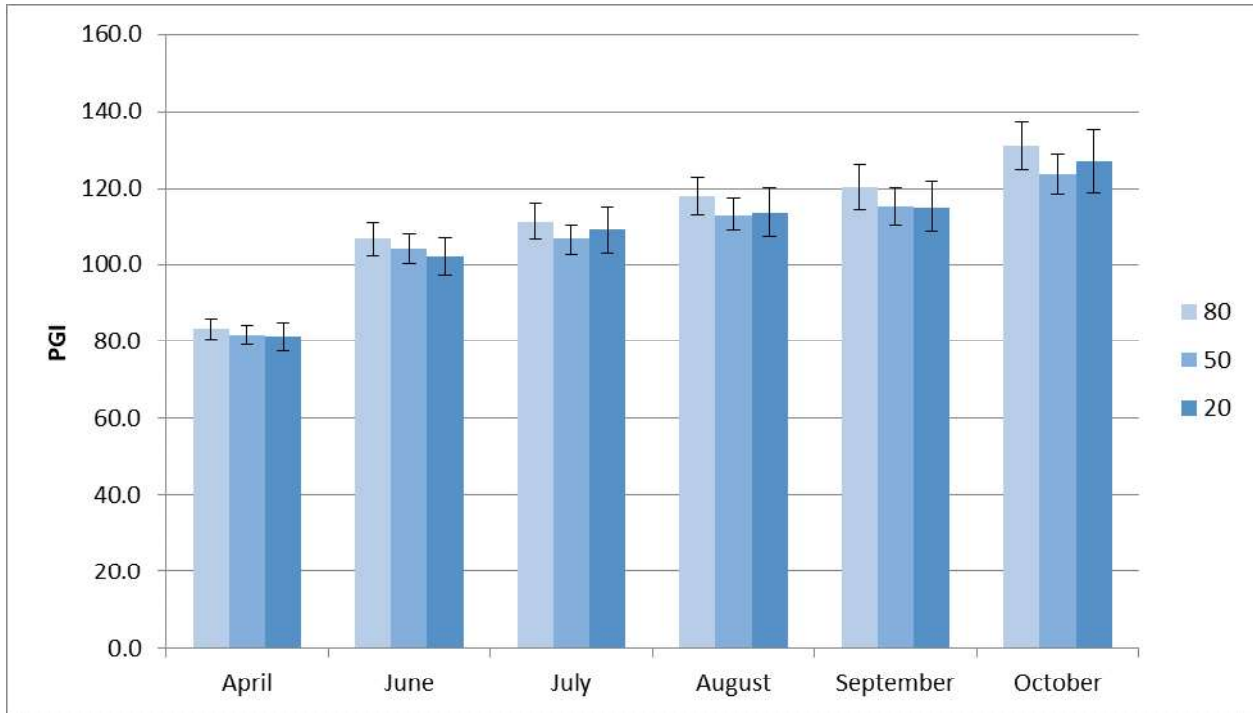


Figure 7a. *Rosa* 'Meiradena' Icecap™ average monthly plant growth index on 3ET<sub>0</sub>-based irrigation treatments in 2017. (May data unavailable.) Bars represent ±1 SE.

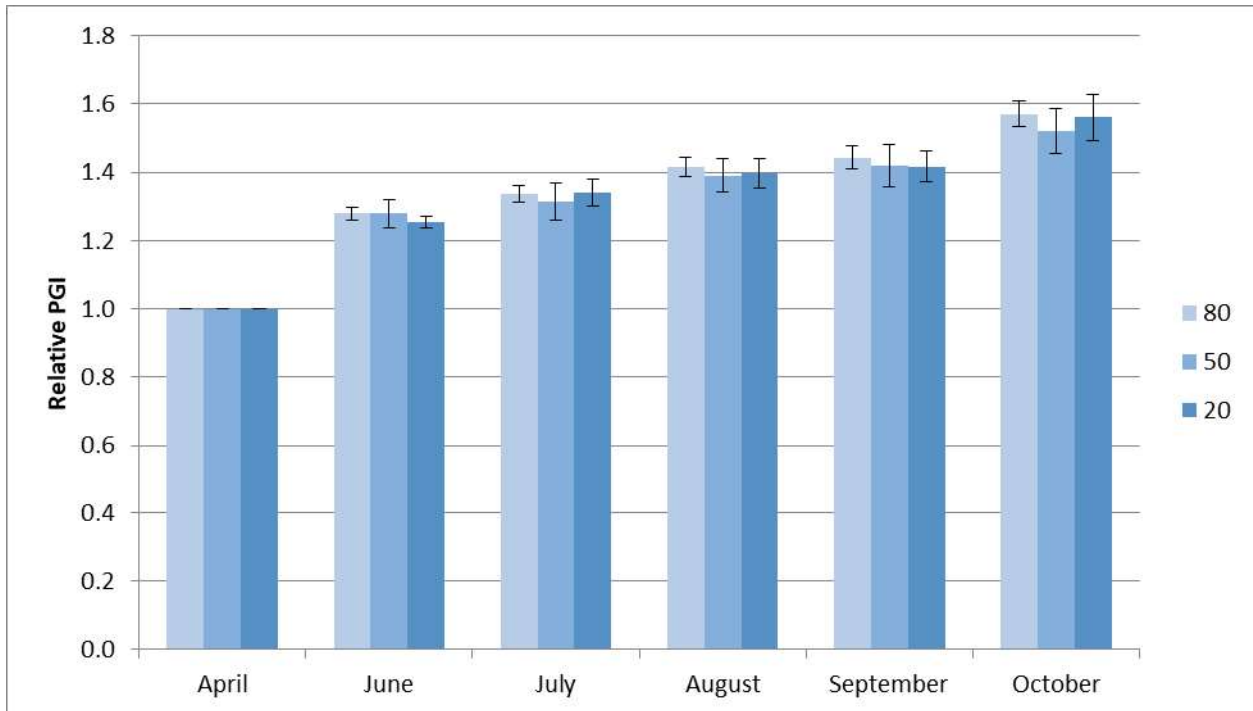


Figure 7b. *Rosa* 'Meiradena' Icecap™ average monthly relative plant growth index on 3ET<sub>0</sub>-based irrigation treatments in 2017. (May data unavailable.) Bars represent ±1 SE. There were no significant differences between treatments.