

Table 21. *Lomandra longifolia* 'Roma 13' Platinum Beauty™ average monthly quality ratings (scale of 1-5) on 3 ET₀-based irrigation treatments in 2017. There were no significant differences between treatments using ANOVA and Tukey's HSD.

	May	June	July	Aug	Sept	Oct	AVG
Overall Appearance							
80%	4.1	4.0	3.9	4.0	3.9	4.3	4.0
50%	4.3	4.0	4.1	3.9	4.0	4.3	4.1
20%	4.1	4.0	4.1	3.9	4.1	4.4	4.1
Foliage							
80%	4.9	5.0	4.0	4.0	4.0	3.9	4.3
50%	5.0	4.9	3.9	4.0	3.9	4.0	4.3
20%	4.9	5.0	4.0	3.7	4.0	4.0	4.3
Flowering							
80%	1.4	1.0	1.0	1.0	1.0	1.0	1.1
50%	1.3	1.0	1.0	1.0	1.4	1.0	1.1
20%	1.1	1.0	1.0	1.0	1.0	1.0	1.0
20%	1.4	1.0	1.0	1.0	1.0	1.0	1.1
Pest Tolerance							
80%	5.0	5.0	5.0	5.0	5.0	5.0	5.0
50%	5.0	5.0	5.0	5.0	4.9	5.0	5.0
20%	5.0	5.0	5.0	5.0	5.0	5.0	5.0
Disease Resistance							
80%	5.0	5.0	5.0	5.0	5.0	5.0	5.0
50%	5.0	5.0	5.0	5.0	4.9	5.0	5.0
20%	5.0	5.0	5.0	5.0	5.0	5.0	5.0
Vigor							
80%	4.0	3.8	4.0	4.0	3.9	3.9	3.9
50%	3.8	3.8	4.1	4.0	4.1	4.0	4.0
20%	4.1	3.9	4.3	3.9	4.1	4.3	4.1

Table 21b. Open House participant ratings for *Lomandra longifolia* 'Roma 13' Platinum Beauty™ on 3 ET₀-based irrigation treatments in May, July, and September 2017.

		May			July			September		
	ET ₀ %	80	50	20	80	50	20	80	50	20
Overall Appearance	Max	5	5	5	5	5	5	5	5	5
	Mean	4.2	4.4	4.0	4.5	4.0	4.3	4.5	4.5	4.6
	Median	4	5	4	5	4	4	4	5	5
	Min	3	3	3	2.5	2	3	3	3	4
Foliage Quality	Max	5	5	5	5	5	5	5	5	5
	Mean	4.3	4.4	4.0	4.4	4.1	4.3	4.5	4.5	4.6
	Median	4	5	4	4	4	4	5	5	5
	Min	3	3	2	3	3	3	3	3	0
Floral Display	Max	5	5	5	4	4	4	5	5	5
	Mean	2.5	2.6	2.9	0.2	0.1	0.3	0.5	1.1	0.7
	Median	3	3	3	0	0	0	0	1	0
	Min	0	0	0	0	0	0	0	0	0

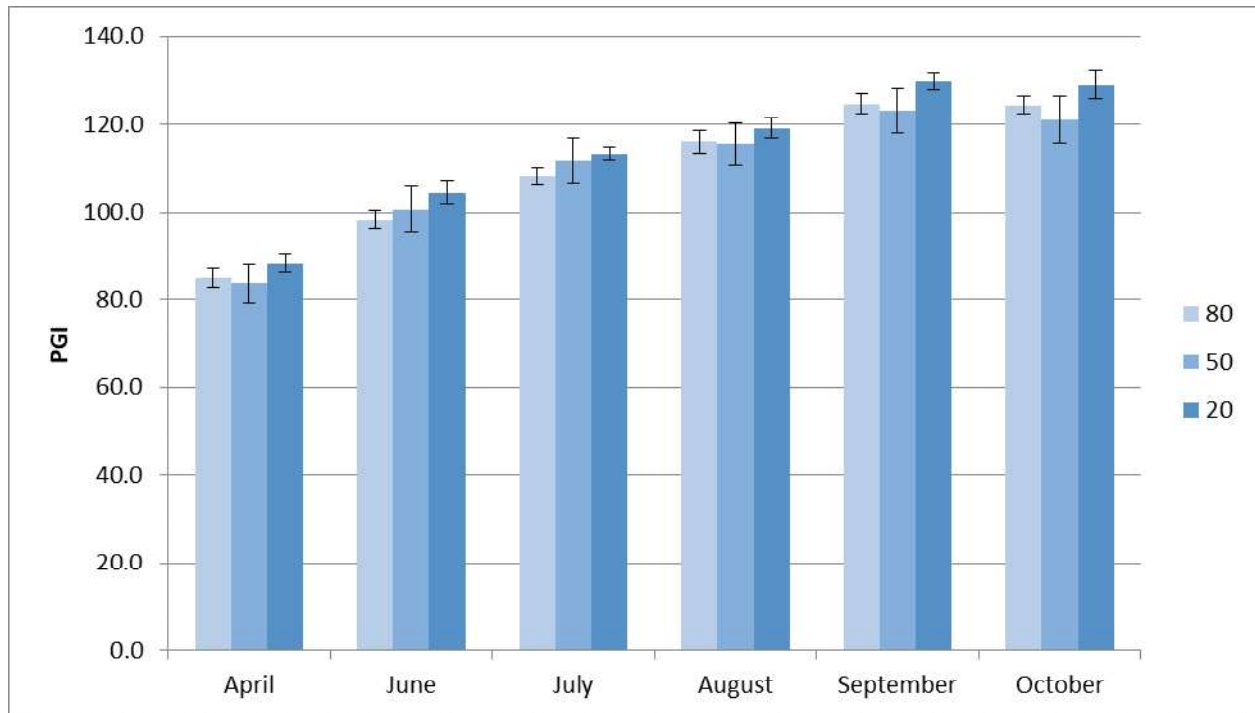


Figure 15a. *Lomandra longifolia* 'Roma 13' Platinum Beauty™ average monthly plant growth index on 3 ET₀-based irrigation treatments in 2017. Bars represent ±1 SE.

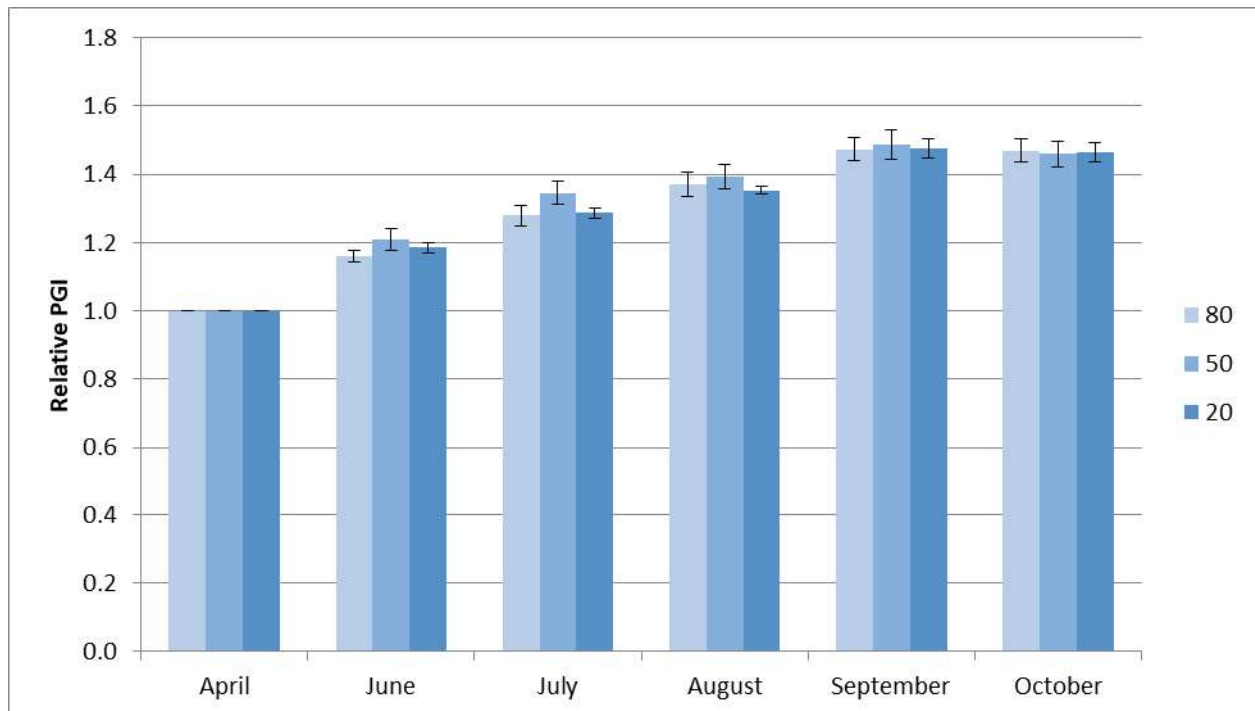


Figure 15b. *Lomandra longifolia* 'Roma 13' Platinum Beauty™ average monthly relative plant growth index on 3 ET₀-based irrigation treatments in 2017. There were no significant differences between treatments.