

## PHOTOS, TABLES, AND FIGURES

Table 6. Average monthly quality ratings for *Buddleia* ‘Tutti-Fruitti’ on 4 ET<sub>0</sub>-based irrigation levels in 2014.

	March	April	May	June	July	Aug	Sept	Oct	AVG
<b>Foliage</b>									
80%	5.0	4.5	3.8	2.8	3.8	4.2	4.2	4.3	<b>4.1</b>
60%	4.8	4.3	3.8	2.4	2.8	3.0	3.3	3.4	<b>3.5</b>
40%	5.0	4.5	3.8	2.6	3.0	3.7	4.2	4.0	<b>3.8</b>
20%	5.0	4.5	4.0	2.7	3.3	3.8	3.8	3.8	<b>3.9</b>
<b>Flowering</b>									
80%		1.0	3.8	2.2	4.8	3.3	4.3	3.0	<b>3.2</b>
60%		1.0	3.3	1.5	3.3	3.2	3.0	2.6	<b>2.6</b>
40%		1.0	3.5	2.7	4.2	3.0	4.2	2.8	<b>3.0</b>
20%		1.0	4.0	2.2	4.2	3.3	3.7	2.7	<b>3.0</b>
<b>Pest Tolerance</b>									
80%	5.0	5.0	4.8	4.8	5.0	5.0	5.0	5.0	<b>5.0</b>
60%	5.0	5.0	4.7	4.7	5.0	5.0	5.0	5.0	<b>4.9</b>
40%	5.0	5.0	4.7	4.7	4.8	5.0	5.0	5.0	<b>4.9</b>
20%	5.0	5.0	4.8	5.0	4.8	5.0	5.0	5.0	<b>5.0</b>
<b>Disease Resistance</b>									
80%	5.0	5.0	5.0	5.0	5.0	5.0	5.0	5.0	<b>5.0</b>
60%	5.0	5.0	5.0	5.0	4.8	4.5	5.0	5.0	<b>4.9</b>
40%	5.0	5.0	5.0	5.0	5.0	5.0	5.0	5.0	<b>5.0</b>
20%	5.0	5.0	5.0	5.0	4.8	4.8	5.0	5.0	<b>5.0</b>
<b>Vigor</b>									
80%	4.5	4.0	4.5	3.7	4.7	3.7	4.5	3.8	<b>4.2</b>
60%	3.8	3.8	4.0	2.8	3.3	3.0	3.3	3.2	<b>3.4</b>
40%	4.8	4.7	4.8	3.8	4.5	3.8	4.7	4.2	<b>4.4</b>
20%	4.8	4.7	4.8	3.7	4.3	3.7	4.7	4.2	<b>4.4</b>
<b>Overall Appearance</b>									
80%	4.0	4.0	3.8	2.6	3.8	4.3	4.8	4.2	<b>3.9</b>
60%	4.2	3.7	3.8	2.1	3.0	3.3	3.5	3.4	<b>3.4</b>
40%	4.0	3.8	3.7	2.5	3.4	3.7	4.7	4.1	<b>3.7</b>
20%	4.0	3.8	4.1	2.8	3.5	3.8	4.4	4.0	<b>3.8</b>

## PHOTOS, TABLES, AND FIGURES

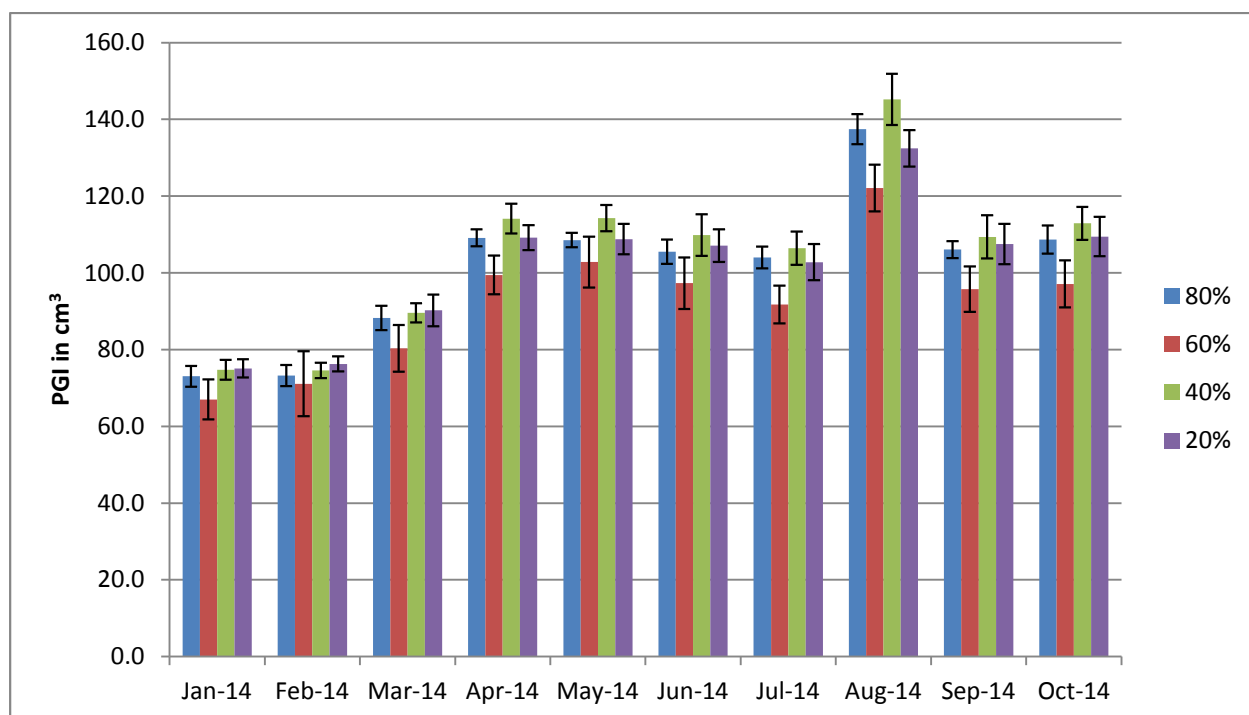


Figure 16a. Average monthly plant growth index of *Buddleia* ‘Tutti-Fruitti’ in 2014 on 4 ET<sub>o</sub>-based irrigation levels. Bars represent  $\pm 1$  SE. There were no significant differences using ANOVA and Tukey’s HSD at  $p < 0.05$ , except between 60% and 40% in the month of August.

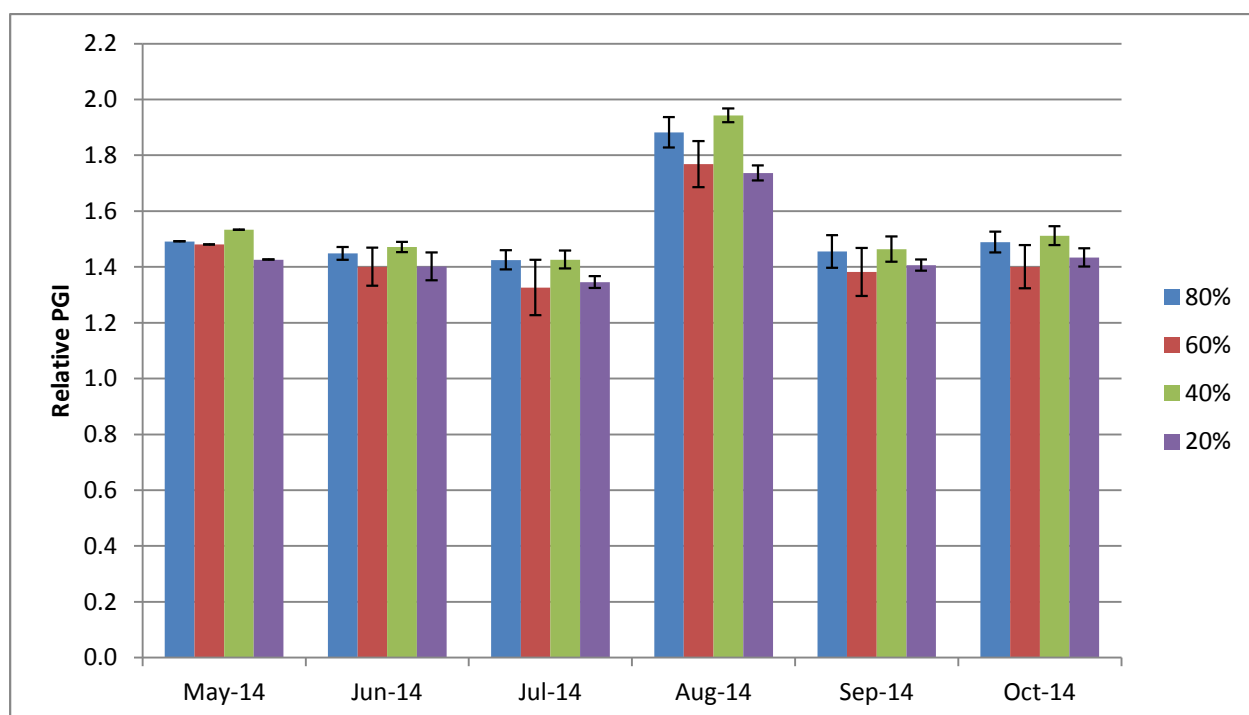


Figure 16b. Average monthly relative plant growth index of *Buddleia* ‘Tutti-Fruitti’ in 2014 on 4 ET<sub>o</sub>-based irrigation levels. Bars represent  $\pm 1$  SE. There were no significant differences using ANOVA and Tukey’s HSD at  $p < 0.05$ .